



Damien Street, London, E1

BUTLER & STAG



Guide Price £500,000 - £550,000
Large Top Floor 3-Bed Ex-Local
Apartment in Whitechapel: A Hidden Gem

Nestled in the heart of Whitechapel, amidst the vibrant streets of East London, lies a remarkable find – a spacious top-floor apartment boasting three bedrooms and a sprawling private terrace. This ex-local gem promises an urban lifestyle coupled with the tranquility of a serene retreat.



Leasehold

- Three Bedrooms
- Great Condition
- Permit Parking Available
- Shed Storage
- Private Terrace
- Close To Amenities
- Close To Public Transport
- New Long Lease

Situated in Whitechapel, renowned for its rich history and eclectic culture, this apartment enjoys proximity to a plethora of amenities and attractions. With easy access to transportation hubs such as Whitechapel Station, residents can effortlessly explore the diverse offerings of London.

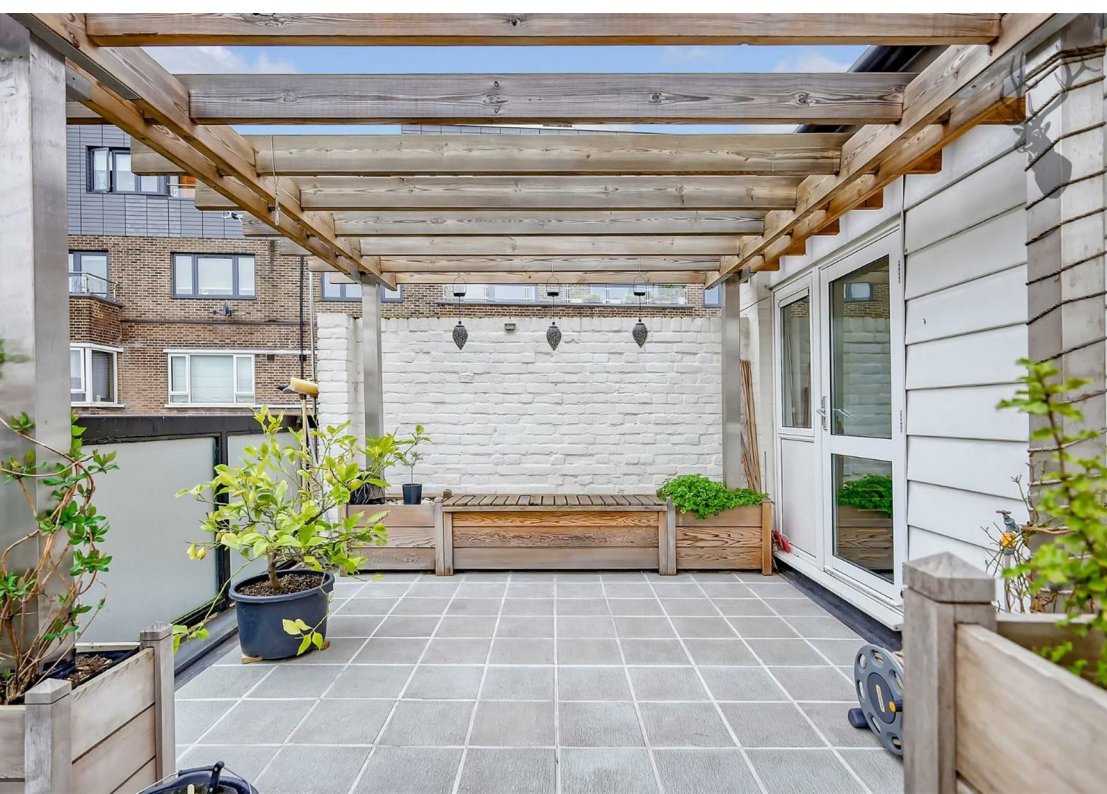
Interior:
 Step inside this spacious abode, where natural light floods through large windows, illuminating the contemporary interiors. The open-plan living area provides an inviting space for relaxation and entertainment, adorned with sleek wooden flooring and modern fixtures.

The kitchen, thoughtfully designed for functionality and style, features ample storage and state-of-the-art appliances, perfect for culinary enthusiasts. Whether whipping up a quick meal or hosting a dinner party, this culinary haven caters to every need.

Bedrooms:
 The apartment boasts three generously sized bedrooms, each offering a peaceful sanctuary for rest and rejuvenation. Soft neutral tones create a calming ambiance, while ample closet space ensures organizational bliss. Whether utilized as sleeping quarters, a home office, or a creative space, these rooms offer versatility to suit any lifestyle.

Bathroom:
 The contemporary bathroom exudes elegance, with its pristine finishes and luxurious amenities. Residents can indulge in moments of relaxation within the sleek bathtub or invigorate their senses in the refreshing shower.

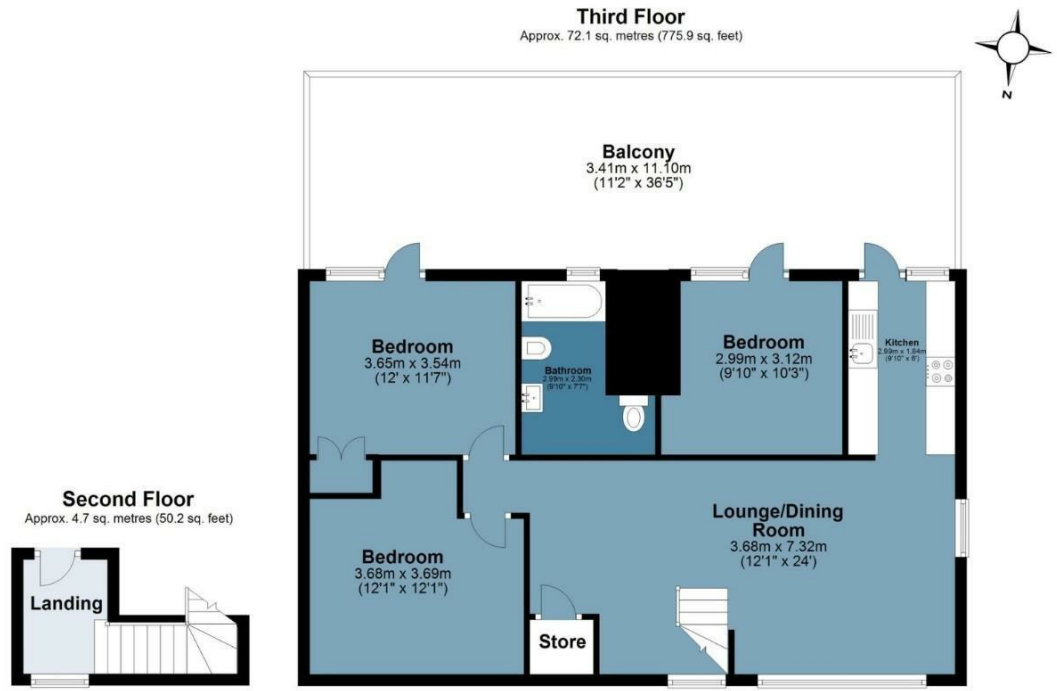




Damien Street



Approx. Gross Internal Area 76.8 sq. metres (826.2 sq. feet)



Measurements are approximate and for illustration purposes only. While we do not doubt the accuracy and completeness, we advise you conduct a careful independent assessment of the property to determine monetary value
© @modephoto.uk www.modephoto.co.uk



☎ 020 8102 1236

🏠 508 Roman Road, Bow, London, E3 5LU

✉ bow@butlerandstag.com

www.butlerandstag.uk

IMPORTANT NOTICE - These particulars have been prepared in good faith and they are not intended to constitute part of an offer or contract. We have not performed a structural survey on this property and the services, appliances and specific fittings have not been tested. All photographs, measurements, floor plans and distances referred to are given as a guide and should not be relied upon.